

Empire Bin Containerization Pilot Expansion to BK2

No More Trash Bags on the Street

outreach@dsny.nyc.gov



sanitation

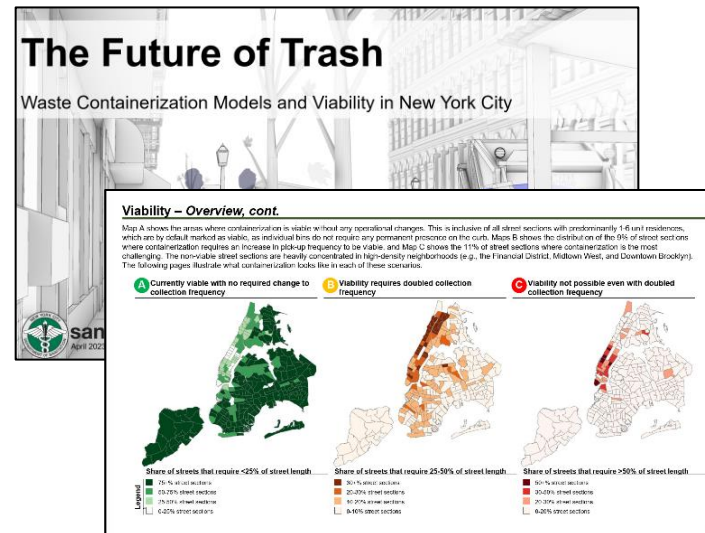
The Trash Revolution

DSNY began a long-overdue transformation of the City's streetscape in 2023, taking historic steps to remove trash from streets and sidewalks.

Reviewed best practices around the globe



Assessed the feasibility of containerization in NYC



Implemented changes in phases

Mayor Adams, Sanitation Commissioner Tisch Unveil First-Ever Official NYC Bin for Trash Pick up, Release Timeline for Residential Containerization of all one to Nine Unit Buildings

July 08, 2024



Containerization Timeline

April 2023: Kicked off the Trash Revolution by changing set-out times for both residential and commercial waste from 4:00 PM to 8:00 PM.

Made major changes to internal operations, picking up well over a quarter of all trash at 12:00 AM rather than 6:00 AM

August 2023: Containerization requirements went into effect for all food-related businesses in NYC.

Installation of the initial 10-block, 14-school, Manhattan Community District 9 pilot containers began.

September 2023: Commercial containerization requirements extended to chain businesses of any type with five or more locations in NYC.

March 2024: Container requirements in NYC went into effect for all businesses to get their trash off the streets and into a secure bin.

November 2024: Container requirements went into effect for low-density buildings with 1-9 residential units — containerizing approximately 70 percent of all trash in the City.

June 2025: Due to the installation of 1,100 Empire Bins, 100 % of trash in Manhattan Community District 9 is now covered by containerization requirements.

What we've learned: Containerization works!

Since low-density residential containerization rules took effect last November, **rat sightings are down citywide by double digits**, when compared with the same period one year prior.



Shared Container Pilot: Takeaways

Hamilton Heights hosted the City's shared container pilot for 14 schools and 10 residential blocks.

Residents' feedback helped to inform the new citywide containerization plan:

- Sealed containers
- Containers assigned to specific addresses
- More accessible containers
- Containers for high-density residential buildings, options for medium-density buildings, small bins for low-density



Containerizing the City

**1-9 Units
REQUIRED**



**10-30 Units
CHOICE**



OR



**31+ Units
REQUIRED**



Expansion to Brooklyn Community District 2

- Brooklyn Community District 2 will be the second neighborhood in the City to have all trash fully containerized.
- This fall, Empire Bins will be installed at a limited number of schools in Fort Greene and Clinton Hill.
- Later in 2026, all schools and high-density residential buildings in BK CD 2 will get Empire Bins.
 - Buildings with 10 to 30 residential units will have a set timeframe to choose to either apply for an Empire Bin or use individual bins



Empire Bins

- Stationary, on-street trash containers, assigned to a specific building
- Secured with an electronic lock, opened with an access card provided to building waste managers
- Serviced by new, automated side-loading trucks
- Holds approx. four cubic yards of waste, or about 25 large trash bags per bin



How to Use Empire Bins

- Empire Bins are assigned to individual buildings for their exclusive use.
- Only building staff and DSNY have access cards to unlock the bins.
- Buildings will receive several access cards if needed.
- You can request replacement access cards online through our service request form.

1



To unlock, hold access card over the card reader.

.....
The lights on the reader will turn green and the reader will beep.

2



Use the foot, hand, or lid levers to open the bin.

3



Place bagged trash into the bin and close the lid.

Empire Bin Installation and Service

- Empire Bins are installed based on existing street infrastructure.
- Your collection schedule will not change.
- There is no change to composting and recycling requirements.
- During the pilot, there will be no cost for bins.
- Properties should begin using Empire Bins as soon as they are installed.
- No parking signs will be posted 3-5 days before installation.



Empire Bin Service

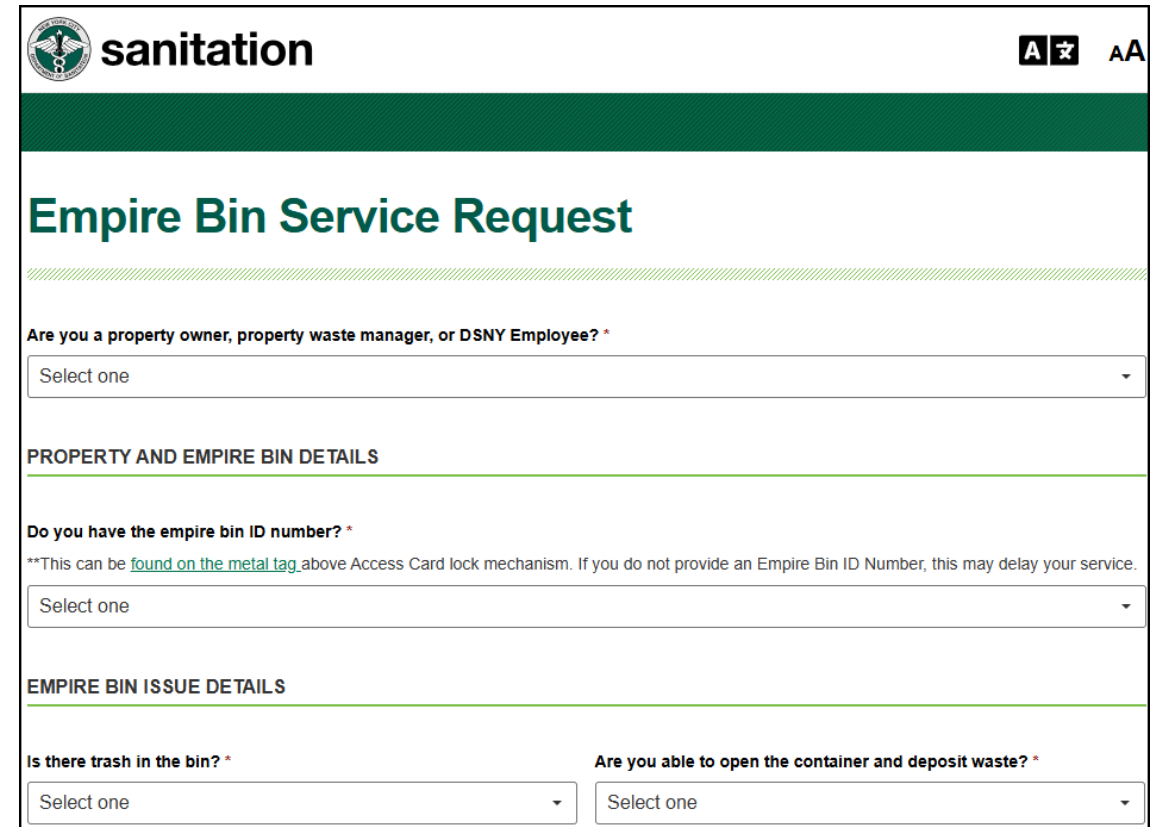
Do not double park near Empire Bins.

- Residents can park in legal parking spots near the bins.
- Blocking the bins prevents DSNY from servicing bins on schedule.
- **Leave four car-lengths free** on either side of the bin.



Cleaning and Maintaining the Empire Bins

- Property owners are responsible for cleaning the area (including all sides and 18 inches from the curb into the street) surrounding the Empire Bin assigned to their property.
- DSNY is responsible for cleaning and maintenance of the Empire Bin itself.
- **If there is a problem (including any damage or breakage) with your Empire Bin or access cards, please contact us via our online form.**



The screenshot shows the 'sanitation' website header with the city seal and accessibility icons. The main heading is 'Empire Bin Service Request'. The form includes a dropdown for user type, a section for 'PROPERTY AND EMPIRE BIN DETAILS' with a dropdown for the bin ID number, and a section for 'EMPIRE BIN ISSUE DETAILS' with two dropdowns for trash status and container access. A note explains that the bin ID number can be found on a metal tag.

sanitation AA

Empire Bin Service Request

Are you a property owner, property waste manager, or DSNY Employee? *

Select one

PROPERTY AND EMPIRE BIN DETAILS

Do you have the empire bin ID number? *

**This can be [found on the metal tag](#) above Access Card lock mechanism. If you do not provide an Empire Bin ID Number, this may delay your service.

Select one

EMPIRE BIN ISSUE DETAILS

Is there trash in the bin? * Are you able to open the container and deposit waste? *

Select one Select one

Individual Bins

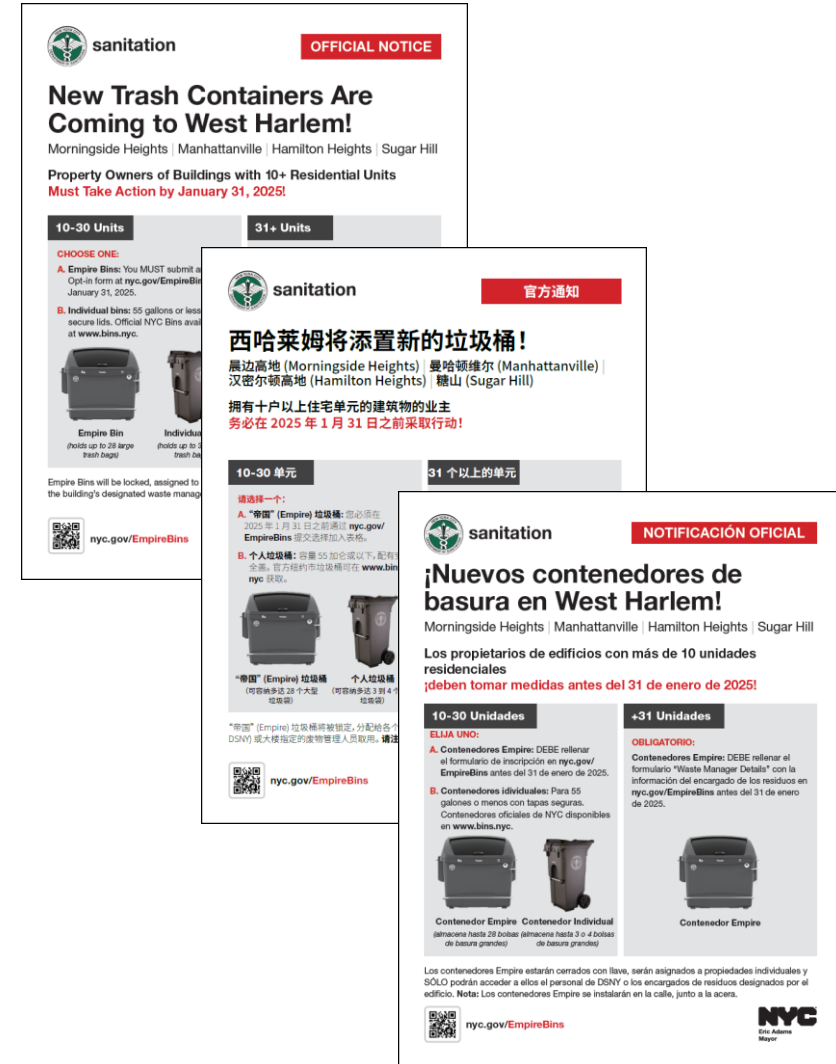
1-9 Unit Buildings and 10-30 Unit Buildings without Empire Bins

- All buildings without Empire Bins must use individual bins (55-gallons or less), with secure lids when the pilot officially begins.
- Large trash items like wrapped mattresses or furniture can be placed at the curb in front of your building on your trash-only collection day. DO NOT block the Empire Bins.
- DO NOT use neighboring Empire Bins.
- DO NOT illegally dump trash around Empire Bins.



Residential Outreach Efforts

- Door-to-door canvassing to educate tenants, property owners and building staff about the expanding Empire Bin program.
- Additional direct outreach to stakeholders in the pilot area.
- A series of virtual info sessions open to the public.
- Mailers to inform residents about how the pilot will work.
- Frequent engagement and communication with the Community Board.



Next Steps

Buildings with 10-30 Units

- Determine how you will manage your building's trash (Empire Bins or Individual Bins)
- Look for our informational mailer
- Fill out our online form when it becomes available or prepare to purchase individual bins next year

Buildings with 31+ Units

- Look for our informational mailer
- Fill out our online form when it becomes available

Frequently Asked Questions

When will my bin be installed?	Residential bin installation will begin in 2026 on a rolling basis. “No parking” signs will be posted 3-5 days before installation.
Will my collection schedule change?	No, all collection days will remain the same. Go to on.nyc.gov/collectionschedule to check your address.
Where do I put large items?	Large trash items like wrapped mattresses or furniture can be placed at the curb in front of your building on your trash-only collection day.
How much trash can each Empire Bin hold?	Approx. four cubic yards of waste, or 25 large bags.
I have more trash than can fit in my Empire Bins.	Let us know through our online service request form.
What if my Empire Bin breaks?	Please let us know through our online form!
Can buildings report littering near Empire Bins?	Yes, please report any illegal dumping or chronic littering near your Empire Bins through our online service request form.

For more information on the Empire Bin
Containerization Pilot:

nyc.gov/empirebins