



NYC Office of the Mayor



Downtown Brooklyn Partnership



NYC Department of Parks and Recreation



Brooklyn Bridge Park

Stakeholder Presentation

March 16, 2015

Brooklyn Strand

Urban Design Action Plan

WXY with MNLA, SSE, DGA



The Brooklyn Strand

Recent & Planned Improvements

Strand Recommendations

- 1 Borough Hall Park**
- 2 Korean War Memorial Plaza / Tillary Parks**
- 3 War Memorial / Cadman North**
- 4 Gateway to Brooklyn**
- 5 BQE Connector**
- 6 Enhanced Safety & Access**
- 7 Overall Design Vision**

Next Steps

The Brooklyn Strand

BROOKLYN TECH TRIANGLE

1

SPACE FOR TECH TO GROW

2

A NEW TECH ECOSYSTEM

3

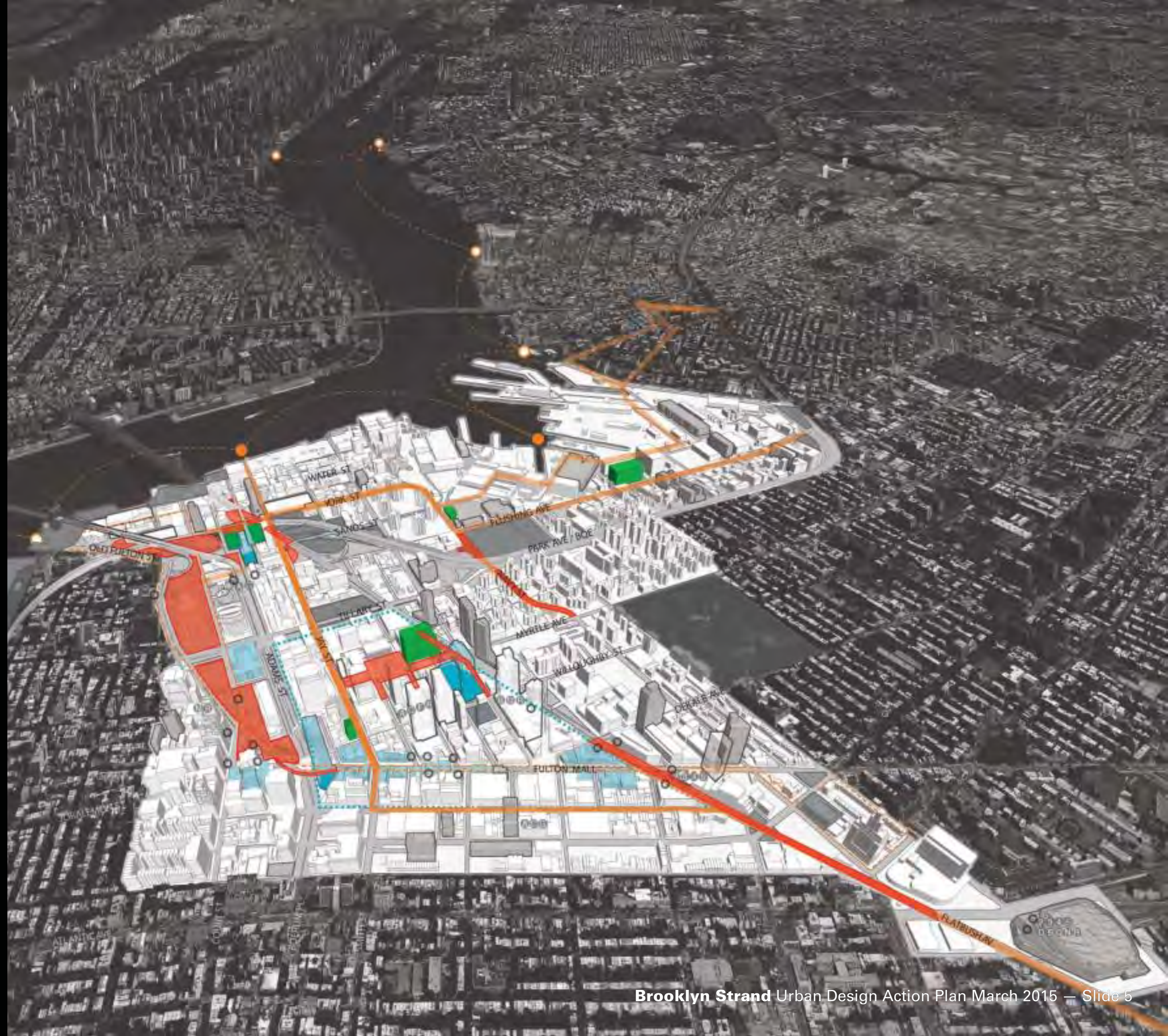
CONNECTIONS ACROSS THE TECH TRIANGLE

4

DYNAMIC PLACES FOR TECH

5

TECH TRIANGLE INTERFACE



Brooklyn
Bridge



Manhattan
Bridge



**BROOKLYN TECH
TRIANGLE**

22,000

total direct tech jobs
(2015)

**BROOKLYN
BRIDGE PARK**

108,000

visitors on summer
weekends

**BROOKLYN
STRAND**

**BROOKLYN
CULTURAL
DISTRICT**

50+

world-class cultural
institutions

**DOWNTOWN
BROOKLYN**

\$11B

of private investment
built and planned
since 2004

Barclays Center



DUMBO

Vinegar Hill

Navy Yard

Brooklyn Heights

Farragut Houses

**Whitman,
Ingersoll Houses**

Fort Greene

Cobble Hill

Cultural District

**Downtown
Brooklyn**

Stakeholders

Office of Brooklyn Borough President
Brooklyn Community Board 2
Metropolitan Transportation Authority
New York City Dept of Parks and Recreation
New York City Dept of Transportation
New York City Economic Development Corp
NYC Department of City Planning
Office of New York City Council, 35th District
New York State Assembly 57th District
New York State Senate 25th District
NYC Council Member, 33rd District
New York State Senate 26th District
US Congress Member District 12
New York State 52nd Assembly District
NYS 50th Assembly District
Brooklyn Heights Association
DUMBO Neighborhood Association
Fulton Ferry Landing Association
GrowNYC Greenmarket
Brooklyn Book Festival

Kings County Supreme Court
General Services Administration
NYC Office of Emergency Management
Court-Livingston-Schermerhorn BID
MetroTech BID
FMIA Board
US District Bankruptcy Court
US Post Office
Brooklyn Public Library
Cadman Park Conservancy
Tenants Assoc. Ingersoll, Whitman, Farragut
Concord Village Association
Brooklyn Law School
St. Francis College
NYU Poly / NYU CUSP
City Tech
NYU-CUSP
NYU-Poly
DUMBO Heights
DUMBO Improvement District



**walkthroughs with over
30 local organizations,
stakeholder working groups,
CB2 Public Workshop
logging over 300 comments**



1935 (Before)



1938 (After)



1951

**BQE Bk Heights
to Navy St**
Approx. 39 acres

**Columbus Park /
Cadman Plaza**
Approx. 46 acres

The Brooklyn Strand

Cadman Connector

DPR Areas: 22.8 acres
DOT/POPs Areas: 5.1 acres
TOTAL: 27.9 acres

BQE Connector

DPR Areas: 10.9 acres
DOT/POPs Areas: 2.0 acres
TOTAL: 12.9 acres

Goals

- 1 Rectify mistakes of urban renewal**
- 2 Repair urban fabric & neighborhood connections**
- 3 Advance equity through public investment in open space in the area**
- 4 Create real access to Brooklyn Bridge Park**
- 5 Craft a world-class gateway into the Brooklyn Borough**
- 6 Identify and create opportunities for affordable housing development on Strand sites**

Objectives

- **Connectivity**
- **Safety & Access**
- **Placemaking**
- **Programming**
- **Strand Identity**

Recent & Planned Improvements

Recent & Planned Improvements

Brooklyn Bridge Park

Old Fulton Plaza

Anchorage Plaza

Bridge Parks

Trinity Park

Cadman Plaza Park

Commodore Barry Park


Whitman Park

McLaughlin Park

Korean War Veterans Plaza

Borough Hall Park

Willoughby Plaza

-  Recent Public Space Investments
-  Current Public Space Investments
-  Recent & Planned Developments
-  Strand Recommendations

Strand Recommendations

Strand Recommendations



Borough Hall Park

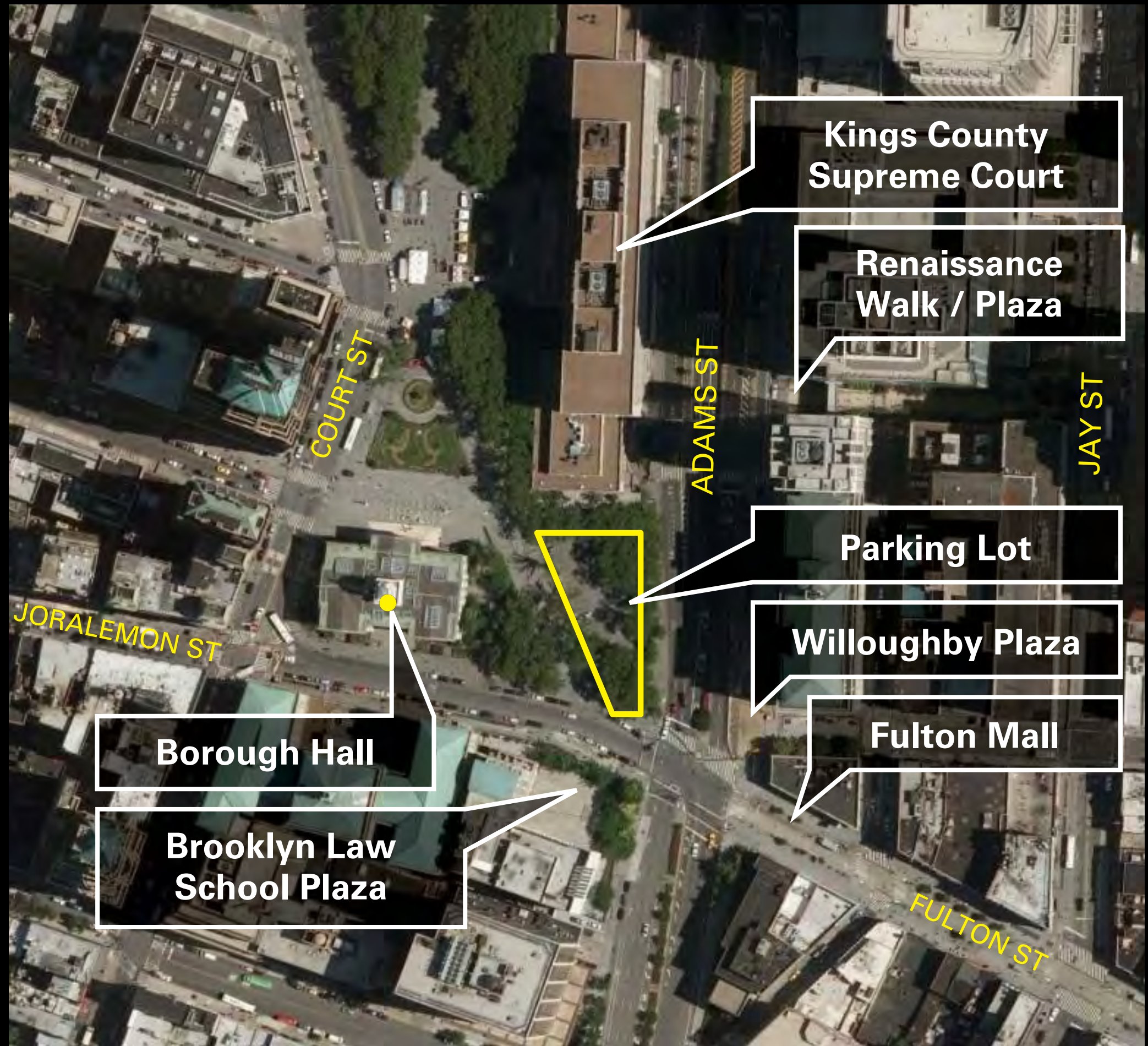
Opportunities

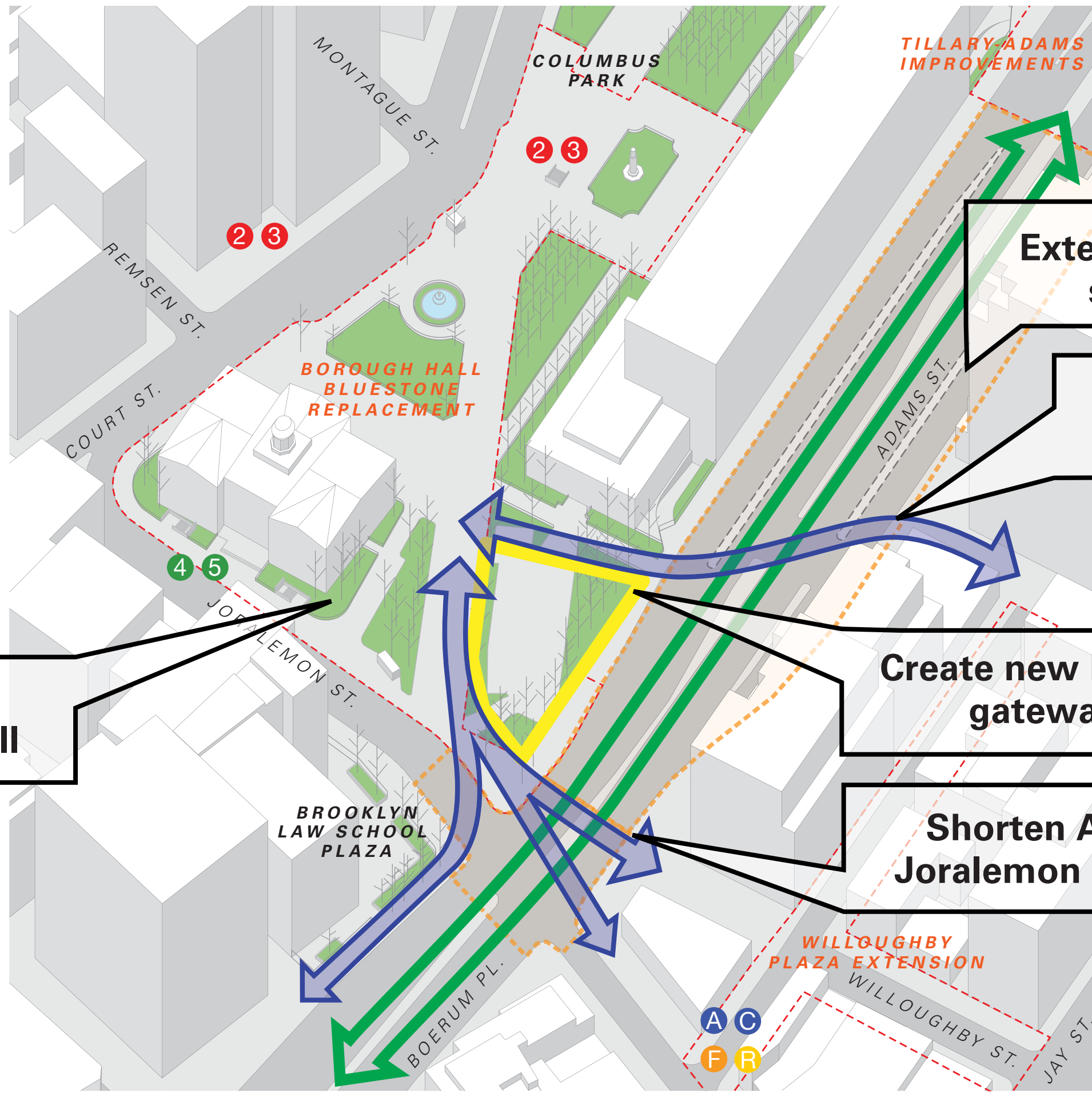
23,000 sf
additional usable park space

**New
Amenity Space**

100 ft
reduction of crossing space at
Adams and Cadman Plaza West

**Improved
Bike Access &
Walkability**








Highlight Borough Hall

Extend Tillary-Adams streetscaping

Reinforce path to MetroTech

Create new Borough Hall gateway space

Shorten Adams and Joralemon St crossings

-  Proposed pedestrian connections
-  Proposed bike lanes
-  Open space recommendations



Vision concept



Vision concept

**Strand
Recommendations**

2

**Korean War
Memorial Plaza /
Tillary Parks**

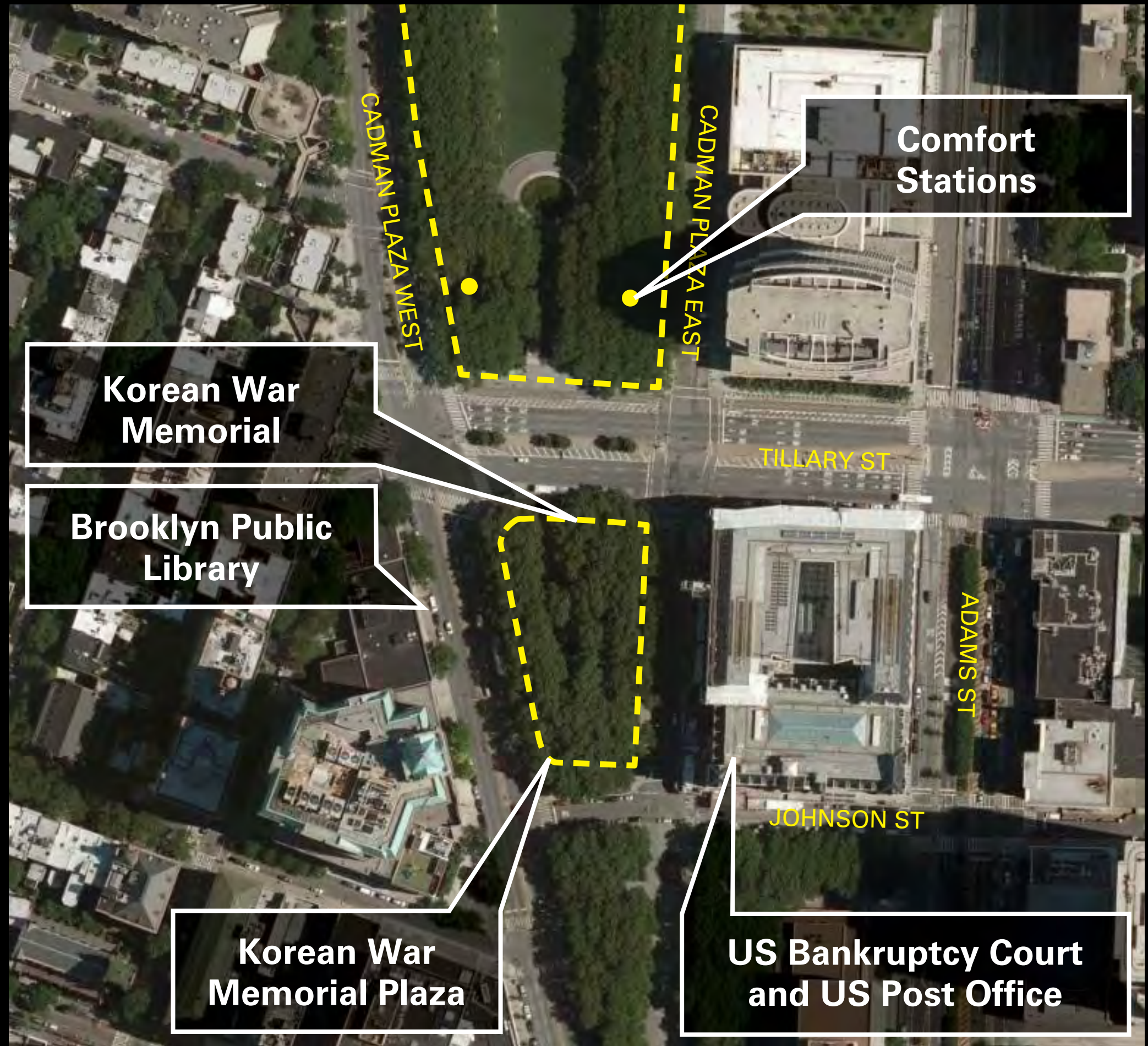
Opportunities

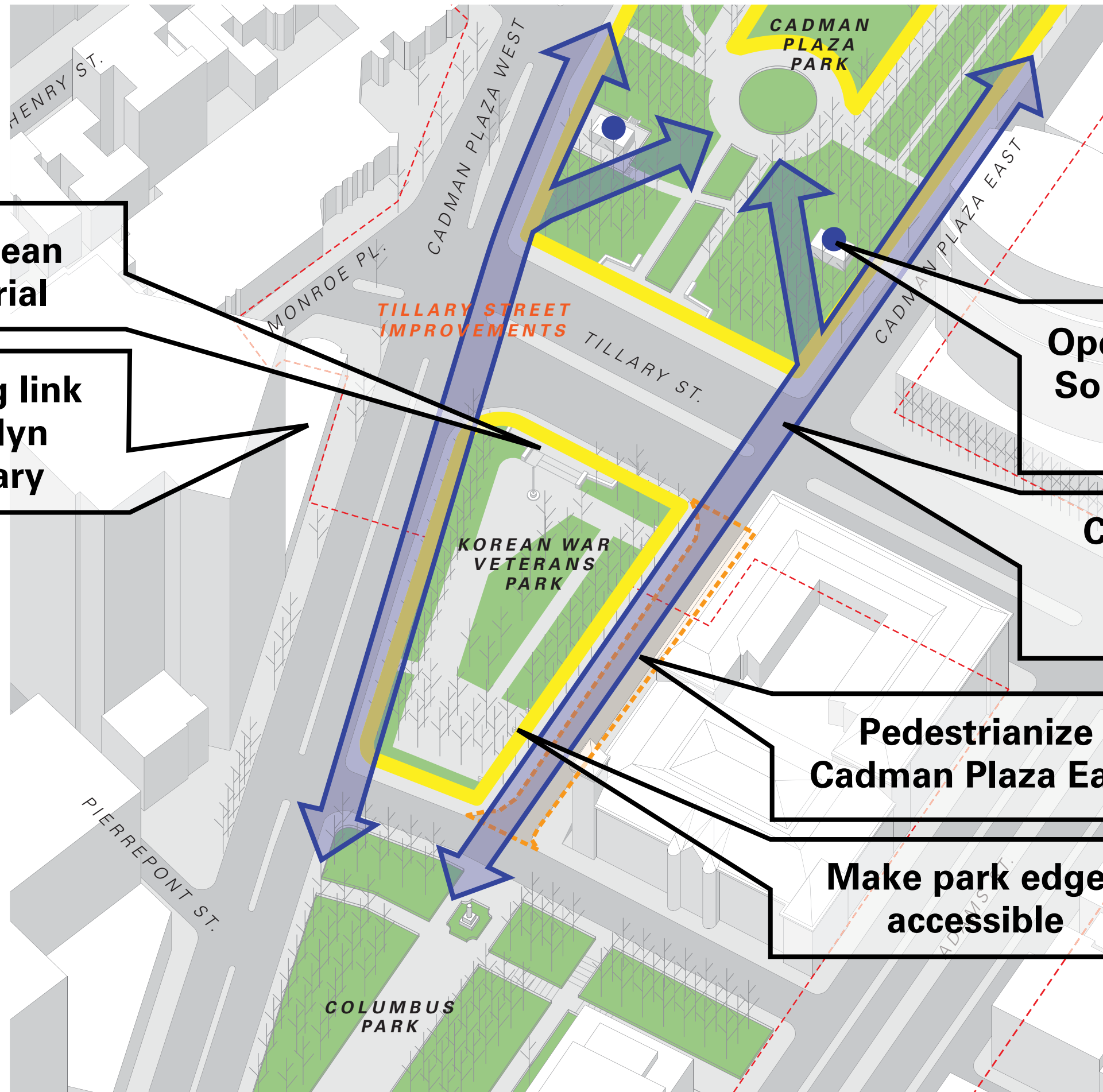
**Accessible
Connections &
Programming**

1.1 acres
of re-envisioned park space
(KWVP)

1,200 sf
of renovated comfort station
space

1.5 acres
of re-envisioned park area
around comfort stations





Improve Korean War Memorial




Programming link with Brooklyn Public Library

Open Cadman Plaza South and Comfort Stations

Connect across Tillary at intersections

Pedestrianize Cadman Plaza East

Make park edges accessible

-  Proposed pedestrian connections
-  Proposed bike lanes
-  Open space recommendations



Vision concept



Vision concept

**Strand
Recommendations**

3

**War Memorial /
Cadman North**

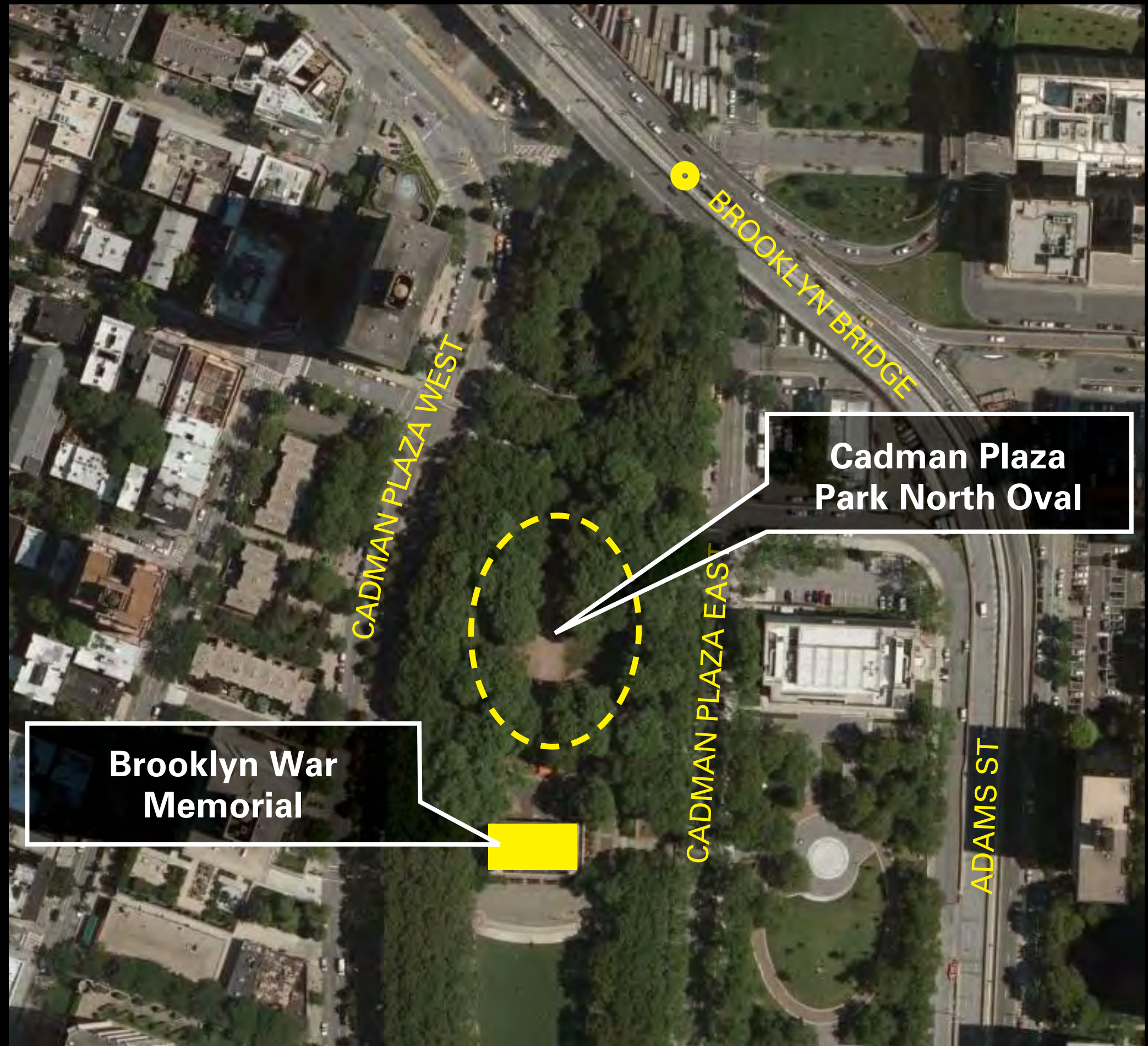
Opportunities

11,000 sf
programmable Brooklyn
War Memorial space

3.7 acres
of re-envisioned park space
(Cadman North)

Bike Access
improved on
Cadman Plaza West

ADA access
improved subway access
to the waterfront



Improve Cadman Plaza West

Activate north oval

Connect north and south Cadman Plaza Park

Implement bike lanes from GSA Cadman East Improvement Plan

New elevator entrance to High Street Station (A/C)

Renovate Brooklyn War Memorial

- Proposed pedestrian connections
- Proposed bike lanes
- Open space recommendations





Advance the vision for the facility as a War Memorial and as a learning center

**Strand
Recommendations**

4

**Gateway to
Brooklyn**

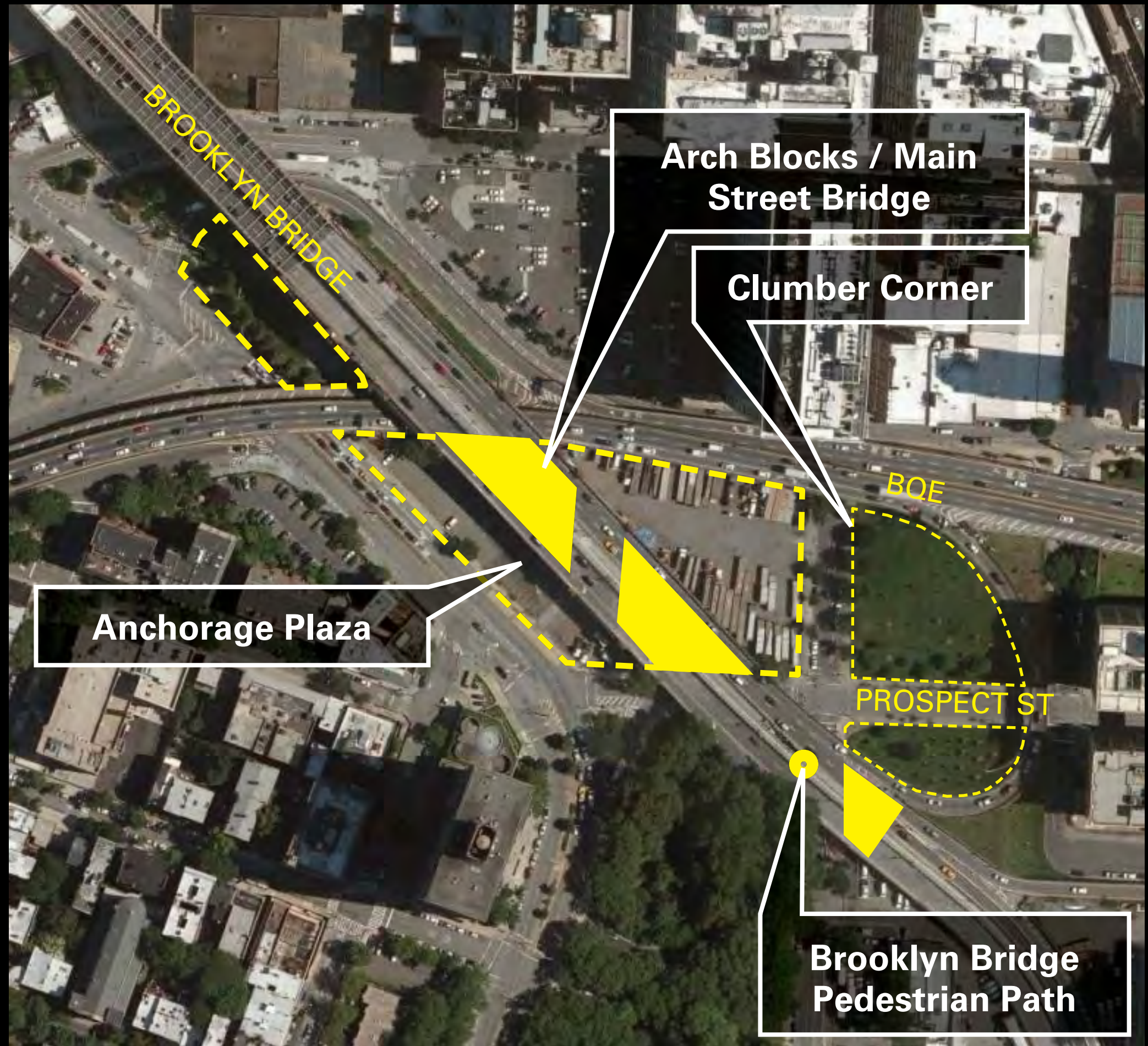
Opportunities

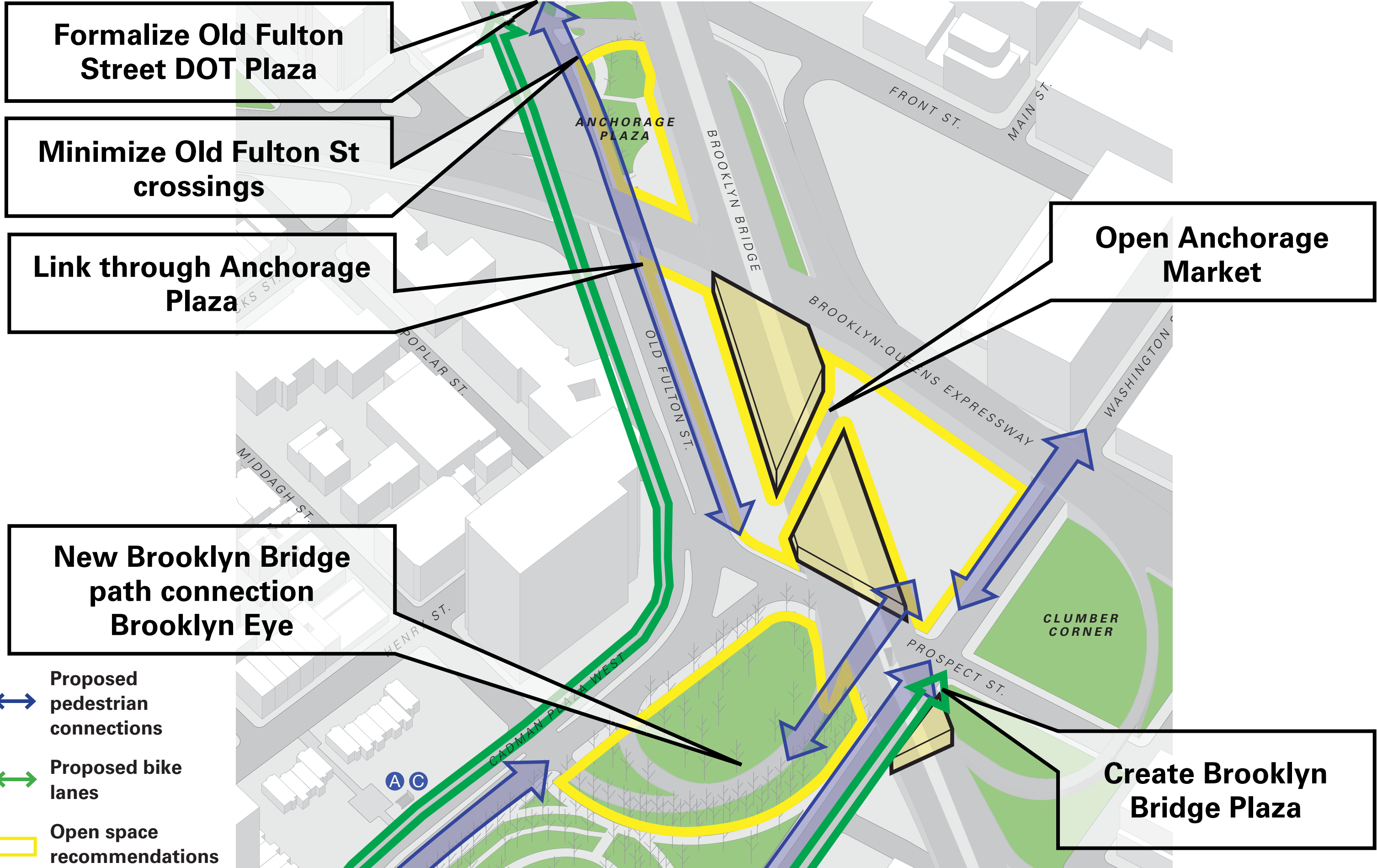
2.4 acres
new plaza space

23,000 sf
interior Brooklyn Bridge
arch block space

from **6 to 17 ft**
sidewalk width along
Old Fulton St

from **8 to 4**
crossings on Old Fulton St







Vision concept



Vision concept



Vision concept

**Strand
Recommendations**

5

BQE Connector

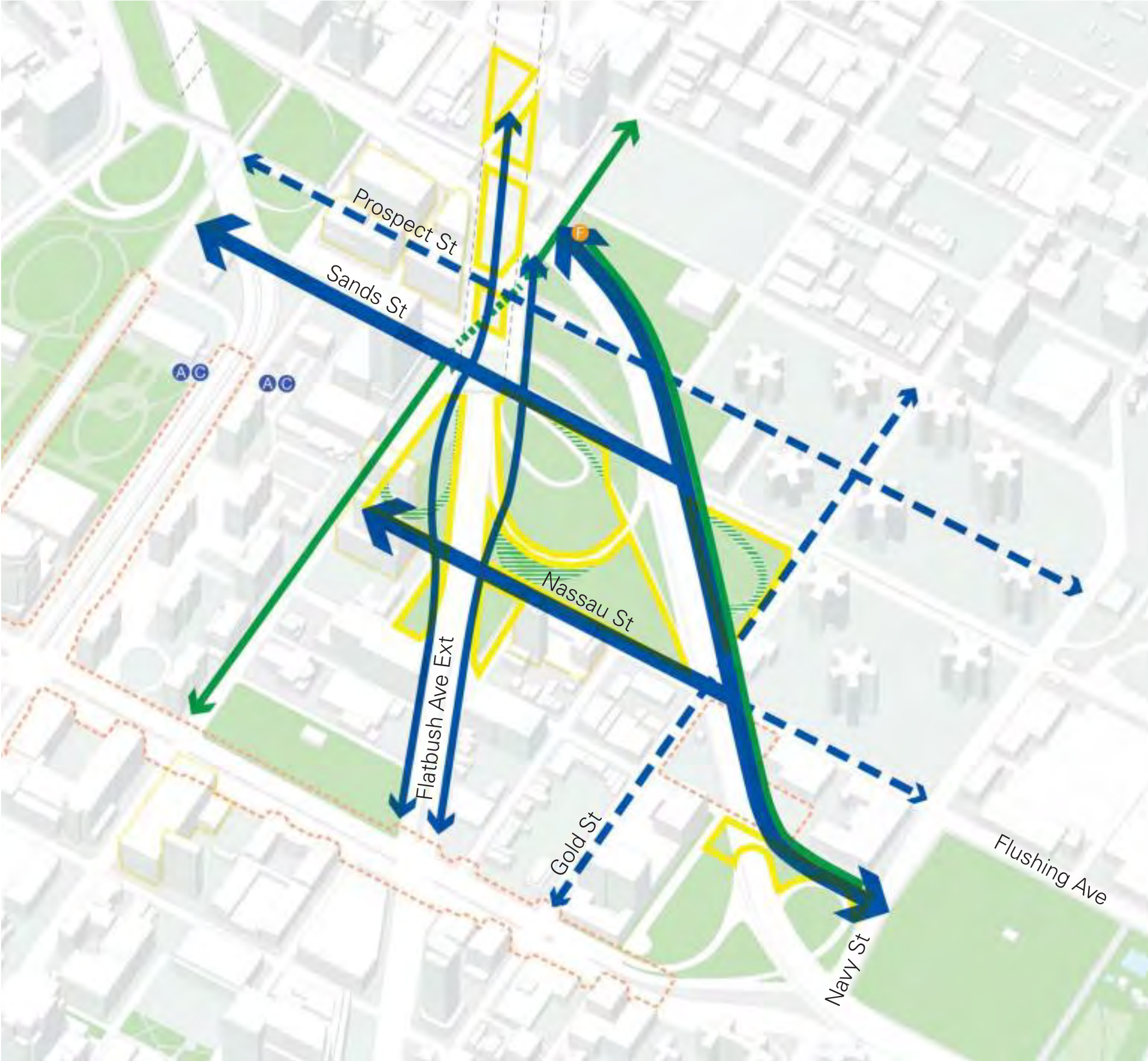
Opportunities

Attractive Walking/
Cycling Connections

Renovated
Open Spaces &
Programming

Improved Visibility/
Sound Attenuation

- ↔ Proposed pedestrian connections
- ↔ Proposed bike lanes
- Open space recommendations



Bridge Park 2

view from Prospect and Bridge St



Superkilen, Copenhagen



Underpass Park, Toronto



Queens Plaza, NYC

Commodore Barry Park

view from Park Ave and Navy St



Linked Spaces - Garscube Link, Glasgow



Climbing - Far Rockaway Park, NYC



BBQ Picnic - Brooklyn Bridge Park, NYC

**Strand
Recommendations**

6

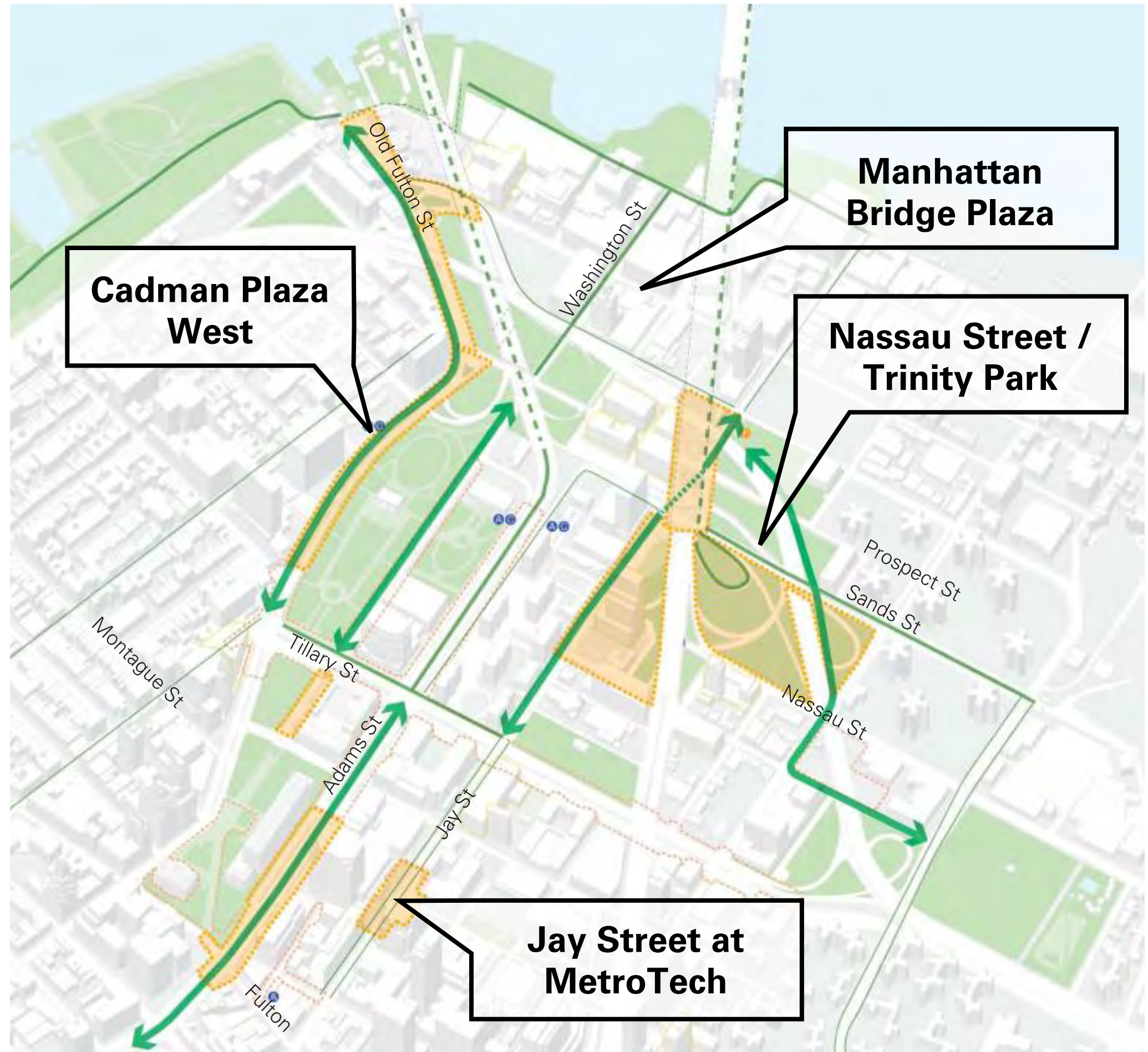
**Enhanced Safety
& Access**

Opportunities

Extend and enhance current street and plaza projects underway

Add new crosswalk and bike path opportunities

- Existing bike lanes
- ↔ Proposed bike lanes
- ▤ Proposed streetscape improvement areas



Cadman Plaza West



New two-way bike lane

New aligned crossings
Cranberry Walk
Pineapple Walk

Widened pedestrian route

Connection to new plaza at
Tillary St / Clinton St

↔ Proposed pedestrian connections

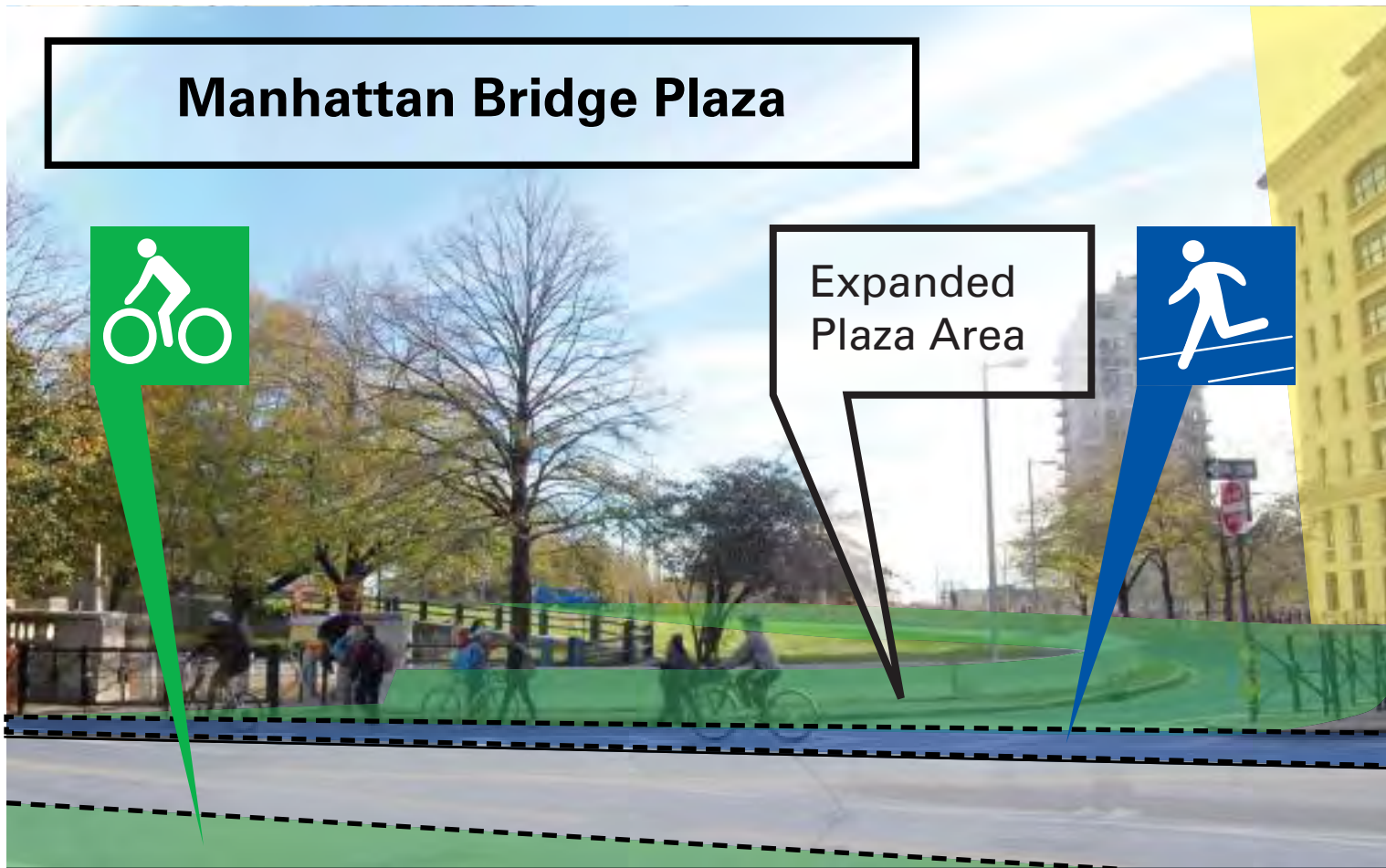
↔ Proposed bike lanes

□ Open space recommendations

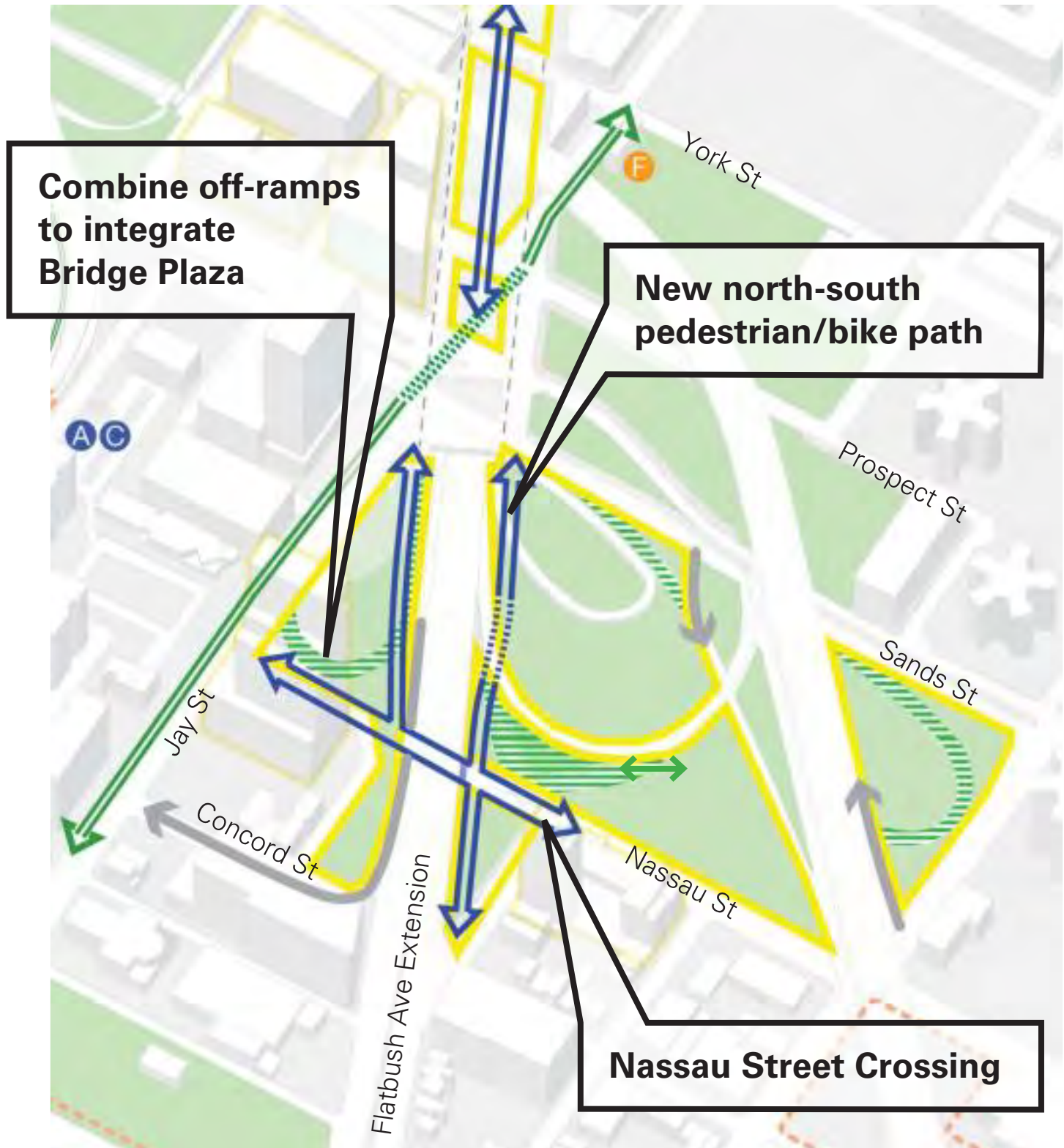
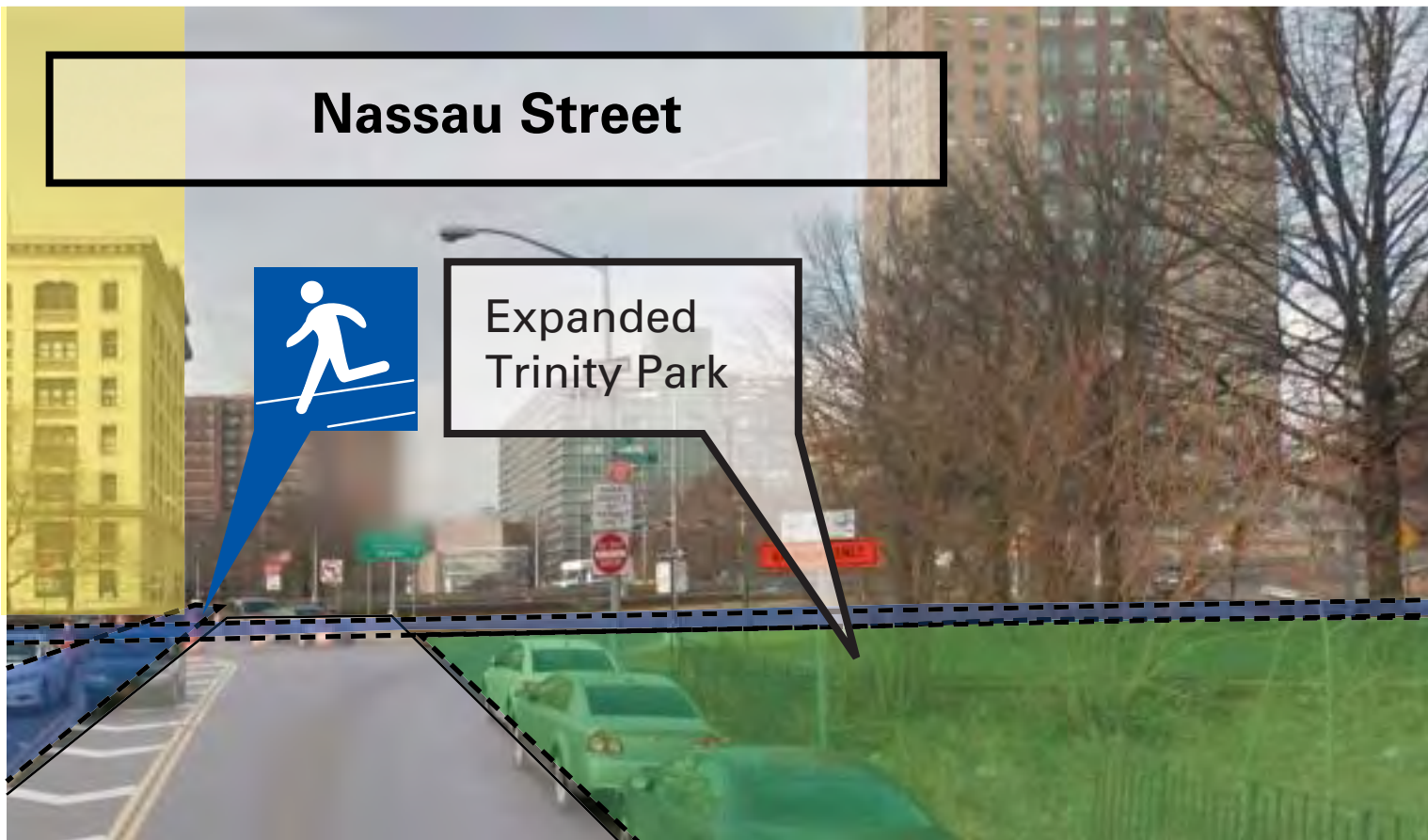
Tillary Street Improvements



Manhattan Bridge Plaza



Nassau Street



- Proposed pedestrian connections
- Proposed bike lanes
- Open space recommendations
- Reconfigured off-ramp
- Enhanced off-ramp



**Concept image from the Reimagining Jay Street Study
Transportation Alternative / Street Plans**



Concept image from the Reimagining Jay Street Study
Transportation Alternative / Street Plans

**Strand
Recommendations**

7

**Overall
Design Vision**

Design

Architecture

Landscape

Lighting

Park Furnishings

Art

Installations

Events



Tree up-lighting



Glow-in-the-Dark Edges



Solar LED Lights

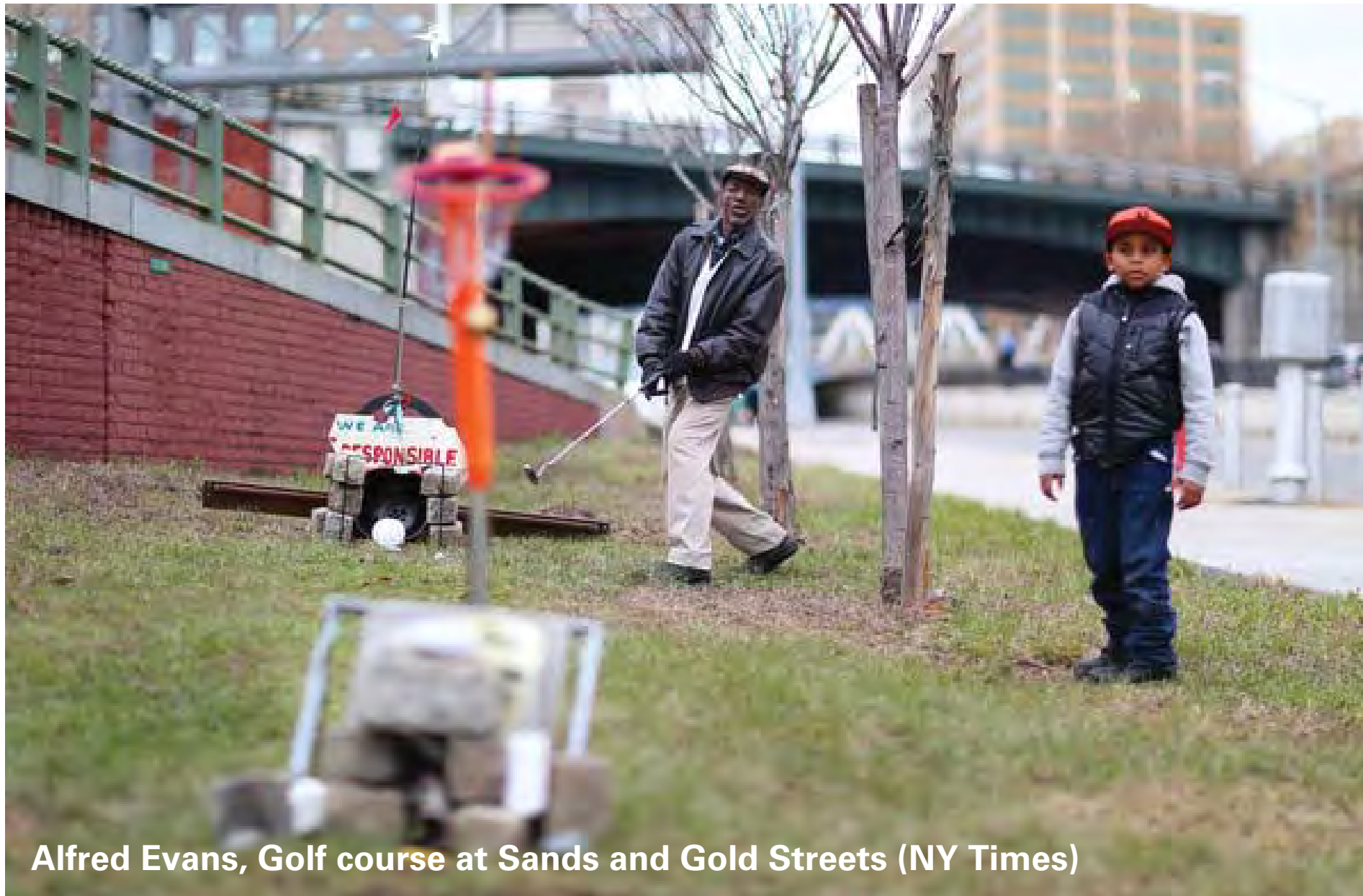
Next Steps

BQE Connector

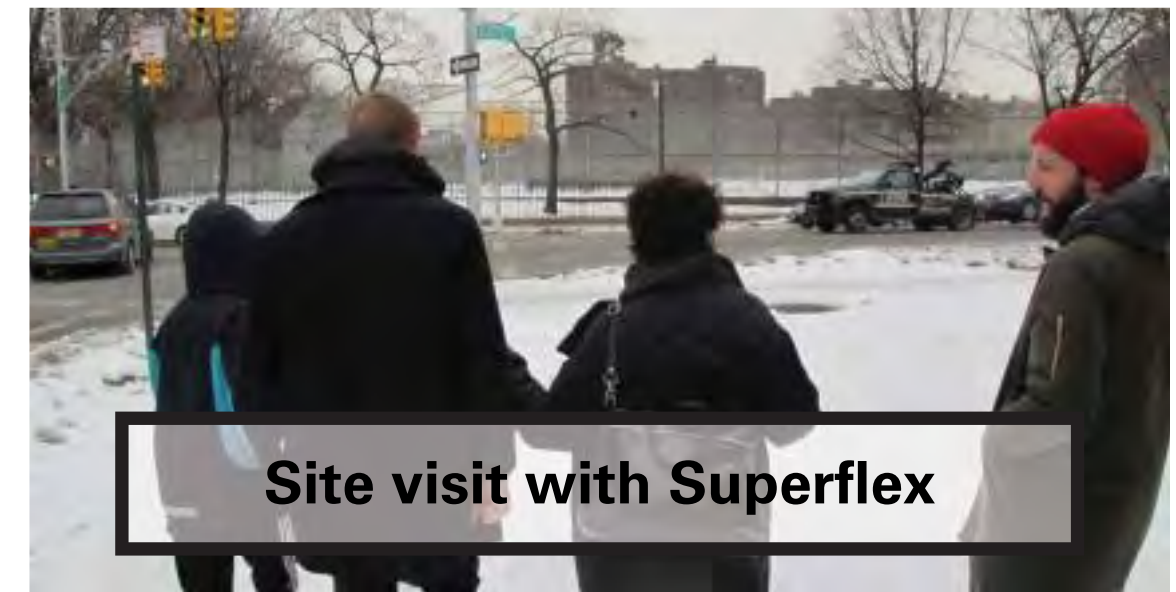
Community engagement and initiatives
starting in April 2015 with Superflex



Superkilen, Copenhagen



Alfred Evans, Golf course at Sands and Gold Streets (NY Times)



Site visit with Superflex

**Gather letters of support from stakeholders
and continue momentum**





